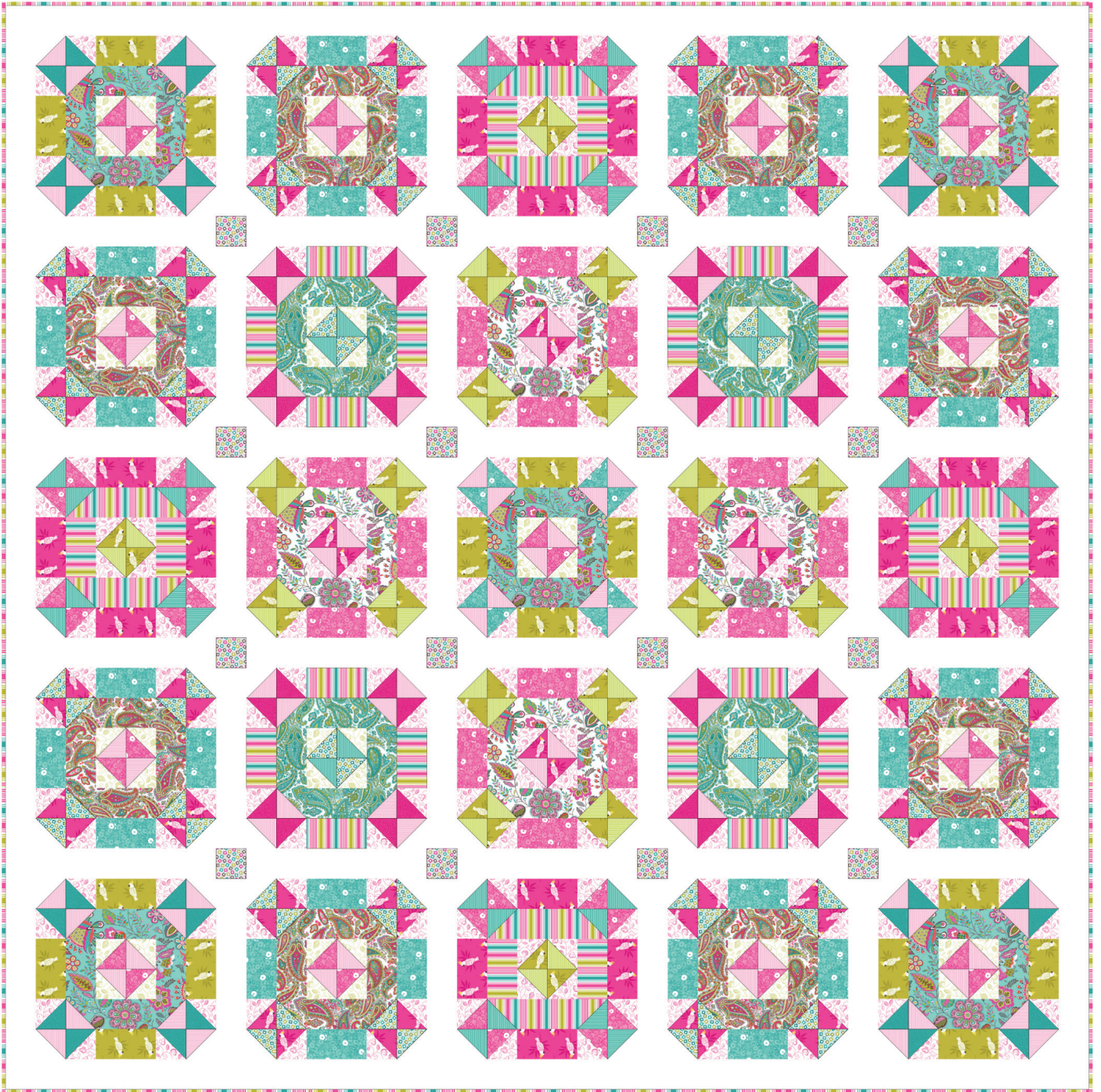


# Monsoon

Finished size 72" x 72" (180cm x 180cm)  
Designed by Lynne Goldsworthy of [lilysquilts.blogspot.com](http://lilysquilts.blogspot.com)  
using the Monsoon collection from Makower UK [www.makoweruk.com](http://www.makoweruk.com)



## Fabric Requirements

SKU	Description	Requirement	Cut
1880 T	Sarasa	15" 40cm	Four 2 ½" WOF strips cut into ten 2 ½" x 4 ½" strips and ten 2 ½" x 8 ½" strips
1880 W	Sarasa	One FQ	Six 2 ½" WOFQ strips cut into eight 2 ½" x 4 ½" strips and eight 2 ½" x 8 ½" strips
1881 G	Cockatoo	15" 40cm	One 6 ¼" WOF strip cut into five 6 ¼" squares. Cut two 2 ½" x 4 ½" strips from the remainder (landscape style) Two 2 ½" WOF strips cut into eighteen 2 ½" x 4 ½" strips
1881 P	Cockatoo	½ yard ½ metre	Two 6 ¼" WOF strips cut into nine 6 ¼" squares. Cut seven 2 ½" x 4 ½" strips from the remainder (landscape style) One 2 ½" WOF strip cut into nine 2 ½" x 4 ½" strips
1882 G	Dotty Scroll	15" 40cm	Two 6 ¼" WOF strips cut into eleven 6 ¼" squares
1882 P	Dotty Scroll	¾ yard ¾ metre	Four 6 ¼" WOF strips cut into nineteen 6 ¼" squares
1883 P	Paisley	½ yard ½ metre	Six 2 ½" WOF strips cut into sixteen 2 ½" x 4 ½" strips and sixteen 2 ½" x 8 ½" strips
1883 T	Paisley	One FQ	Six 2 ½" WOFQ strips cut into eight 2 ½" x 4 ½" strips and eight 2 ½" x 8 ½" strips
1884 P	Lollipop Flower	20" 50cm	Two 2 ½" WOF strips cut into sixteen 2 ½" x 4 ½" strips Two 6 ¼" WOF strips cut into nine 6 ¼" squares
1884 T	Lollipop Flower	One FQ	Four 2 ½" WOFQ strips cut into sixteen 2 ½" x 4 ½" strips Cut one 6 ¼" square from the remainder
1886 P	Dotty	One FQ	Four 6 ¼" squares
1886 T	Dotty	One FQ	Four 6 ¼" squares
1887 M	Square Spot	One F8th	Sixteen 2 ½" squares
1887 T	Square Spot	15" 40cm	One 6 ¼" WOF strip cut into five 6 ¼" squares Two 2 ½" WOF strips cut into thirty-two 2 ½" squares
2086P	Deck Stripe	One yard One metre	Twelve 2 ½" WOF strips. Cut three into twenty-four 2 ½" x 4 ½" strips and two into eight 2 ½" x 8 ½" strips. Leave the remainder for the binding.
2088 G2	Pin Stripe	One FQ	One 6 ¼" WOFQ strip cut into three 6 ¼" squares Two 2 ½" WOFQ strips cut into sixteen 2 ½" squares
2088 P4	Pin Stripe	20" 50cm	Two 6 ¼" WOF strips cut into nine 6 ¼" squares. Cut four 2 ½" squares from the remainder Two 2 ½" WOF strips cut into thirty-two 2 ½" squares
2088 T	Pin Stripe	One FQ	One 6 ¼" WOFQ strip cut into three 6 ¼" squares Two 2 ½" WOFQ strips cut into sixteen 2 ½" squares
2000 W01	Spectrum	2 yards 1 ¾ metres	Three 6 ¼" WOF strips cut into thirteen 6 ¼" squares Nineteen 2 ½" WOF strips sewn end to end and cut into forty 2 ½" x 12 ½" strips, two 2 ½" x 68 ½" and two 2 ½" x 72 ½" strips
Wadding	2m square 80" square	279 Cotton Mix 80-20 from <a href="http://www.vlieseline.com/en">http://www.vlieseline.com/en</a>	
Threads		Aurifil 50wt for piecing and 40wt for quilting from <a href="http://www.aurifil.com">http://www.aurifil.com</a>	
Templates		Fifty-two HST templates	



## Notes:

- Read the pattern in full before starting.
- $\frac{1}{4}$ " seams are used throughout except where stated otherwise.
- Press after each seam, pressing seams open or to one side as preferred.
- WOF - width of fabric - a strip of fabric cut from selvedge to selvedge.
- WOFQ – width of a FQ (a strip of fabric cut from the selvedge to the centre cut in the case of a FQ)
- Make sure to visit <http://www.makoweruk.com/projects/> to ensure you are working from the most up-to-date version of the pattern.

## Cutting Instructions

1. Cut the fabrics as listed in the fabric requirements schedule.

## Making the quilt top

1. Make the following sets of eight HST units (see steps 2-6 below for more information):
  - Five pink pin stripe and white;
  - Four teal square spot and white;
  - Two teal pin stripe and white;
  - Two (lime) green pin stripe and white;
  - Four teal dotty and pink dotty scroll;
  - Nine pink cockatoo and pink dotty scroll;
  - Four pink lollipop flower and pink dotty scroll;
  - Four pink dotty and pink flower scroll;
  - Five green cockatoo and pink flower scroll;
  - One teal lollipop flower and pink dotty scroll;
  - Five pink lollipop flower and green dotty scroll;
  - Four pink pin stripe and green dotty scroll;
  - One (lime) green pin stripe and pink dotty scroll;
  - One teal square spot and green dotty scroll; and
  - One teal pin stripe and green dotty scroll.
2. To make each set of eight half square triangle units (HSTs) you will use one HST template and two (different)  $6\frac{1}{4}$ " fabric squares. The fabric squares are  $\frac{1}{2}$ " bigger than the templates so that they overhang the paper by  $\frac{1}{4}$ " all around the dashed line – this is to make it easier to line up the fabrics to the paper template. Each HST template makes eight HST units.
3. For example, for one of the sets of pink pin stripe and white HST units, pin one pink pin stripe and one white  $6\frac{1}{4}$ " square to the back of one of the HST templates with the fabrics right sides together and the lighter fabric next to the paper.
4. Shorten your machine stitch to 1.5 and sew along all of the red lines. Cut the template and fabric along all the blue lines using a rotary cutter. Trim off the corners on each triangle along the green lines. Press each HST unit open and remove paper from the back of each HST unit. Repeat for the remaining sets of HST units.
5. See the main quilt image on the front of the pattern for fabric placement for each of the twenty-five blocks in the quilt.
6. Sew the four HST units at the centre of the block into a four-patch (fig 1).

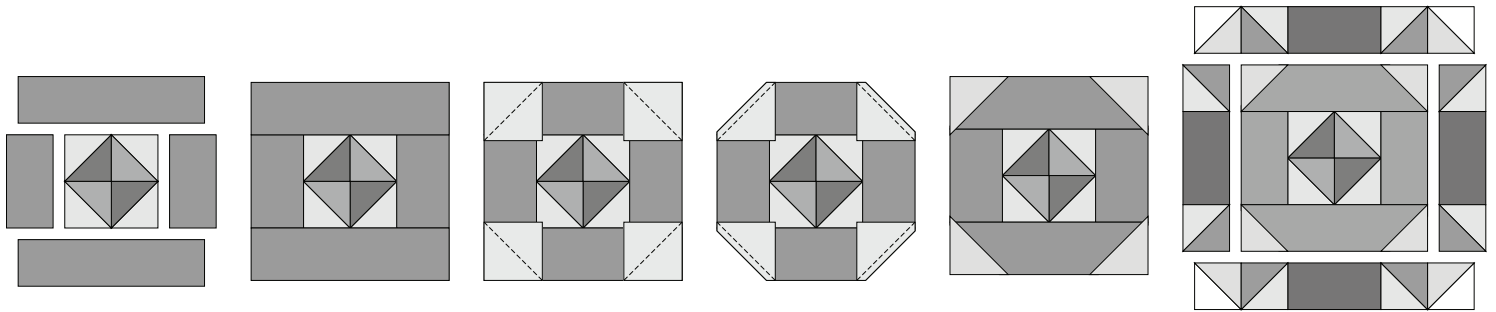


Fig 1-6

7. Sew  $2\frac{1}{2}$ " x  $4\frac{1}{2}$ " print strips to either side of this piece then  $2\frac{1}{2}$ " x  $8\frac{1}{2}$ " print strips to the top and bottom (figs 1 and 2).
8. Add corner square triangles to the four corners of the block. To do this, mark a diagonal line on the back of four print  $2\frac{1}{2}$ " squares.
9. Place right sides together with the four corners of the block and sew along the diagonal lines (fig 3).
10. Trim away excess fabrics  $\frac{1}{4}$ " beyond the seam lines (fig 4).
11. Fold over and press (fig 5).
12. Sew one HST unit to each end of two  $2\frac{1}{2}$ " x  $4\frac{1}{2}$ " print strips and sew to the sides of the block (fig 6).
13. Sew two HST units to each end of two  $2\frac{1}{2}$ " x  $4\frac{1}{2}$ " print strips and sew to the top and bottom of the block (fig 6).
14. Sew the blocks into five rows of five blocks with white  $2\frac{1}{2}$ " x  $12\frac{1}{2}$ " strips in between the blocks (fig 7).
15. Sew four rows containing five white  $2\frac{1}{2}$ " x  $12\frac{1}{2}$ " strips and four multi square spot print  $2\frac{1}{2}$ " square cornerstones (fig 7).
16. Sew the five block rows and the four cornerstone rows together (fig 7).
17. Sash the sides with the white  $2\frac{1}{2}$ " x  $68\frac{1}{2}$ " and then the top and bottom with the white  $2\frac{1}{2}$ " x  $72\frac{1}{2}$ " strips.

### Finishing the quilt

1. Sew the binding strips end to end using diagonal or straight seams as preferred and press wrong sides together along the length to make a double fold binding.
2. Make a quilt sandwich, basting together the quilt back, the wadding and the quilt top.
3. Quilt as desired then trim the quilt square, removing excess wadding and backing. We quilted diagonal lines approximately  $1\frac{1}{2}$ " apart using a white 40wt Aurifil thread on the front and back.
4. Bind the quilt taking care to mitre the corners.

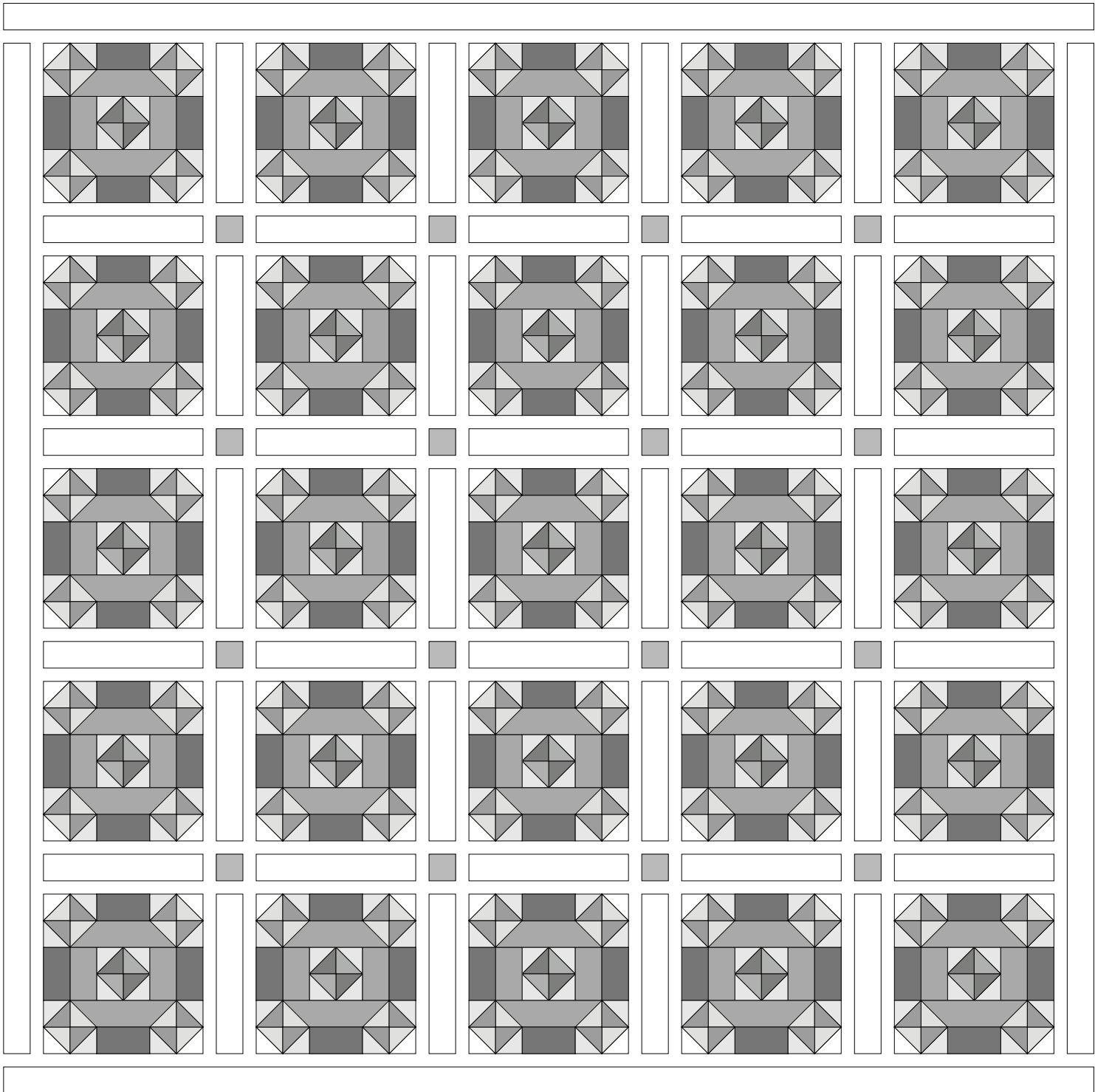


Fig 7







\*1880 W Sarasa



\*1880 T Sarasa



\*1883/T Paisley



\*1881/P Cockatoo



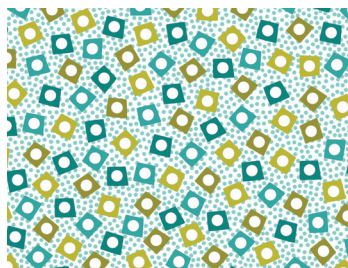
\*1881/G Cockatoo



\*1883/P Paisley



\*1884/T Lollipop Flower



\*1887/T Square Spot



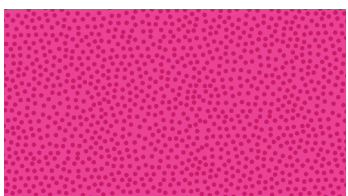
\*1887/M Square Spot



\*1884/P Lollipop Flower



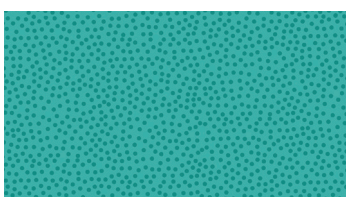
\*2086/P Deck Stripe



\*1886/P Dotty



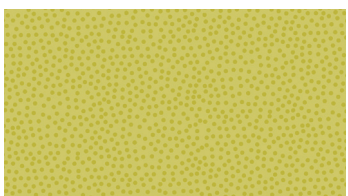
\*1882/P Dotty Scroll



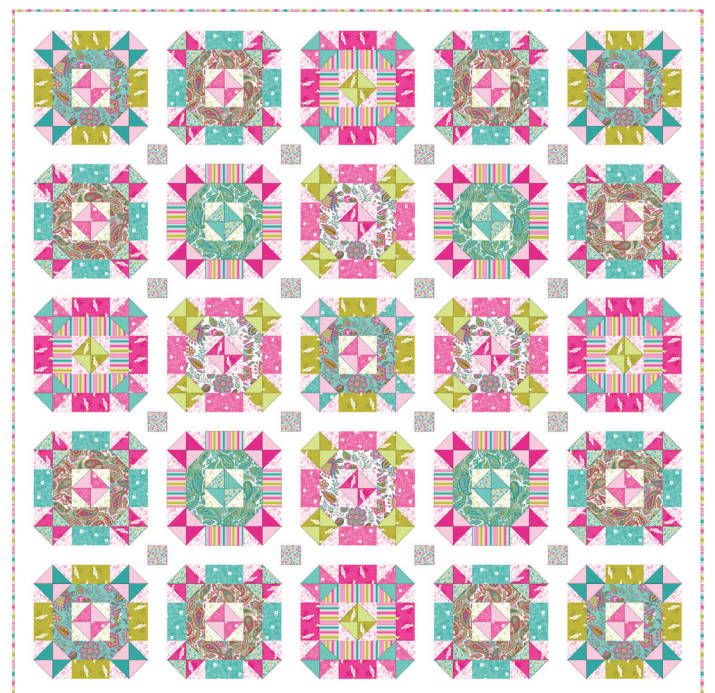
\*1886/T Dotty



\*1882/G Dotty Scroll



1886/G Dotty



Monsoon Quilt by Lynne Goldsworthy  
of [lilysquilts.blogspot.com](http://lilysquilts.blogspot.com)  
Finished size 72" x 72" ( 1.80 x 1.80m)  
Download free instructions from [www.makoweruk.com](http://www.makoweruk.com)  
\*Designs used in quilt plus 2000 W01 Spectrum

All designs 50% of actual size